

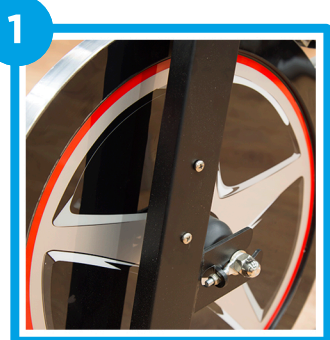
IC300 PRO BOTTLE HOLDER INSTRUCTIONS

TOOLS

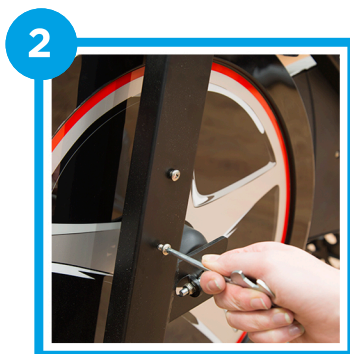


1 X MULTI TOOL

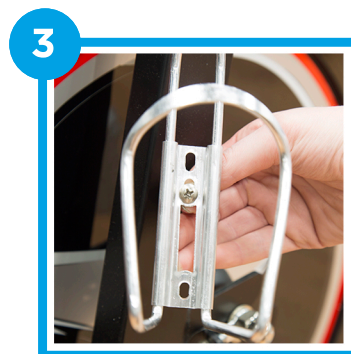
INSTRUCTIONS



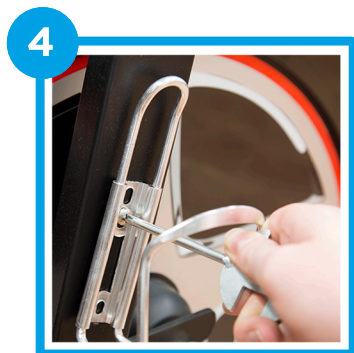
Located on one side of
the flywheel will be
two screws



Start by removing
these



Feed the screws
through the bottle
holder



Using the multi tool
attach the bottle
holder to the frame



Insert the bottle